

Sew Suzie Quilts

SewSuzie05@gmail.com

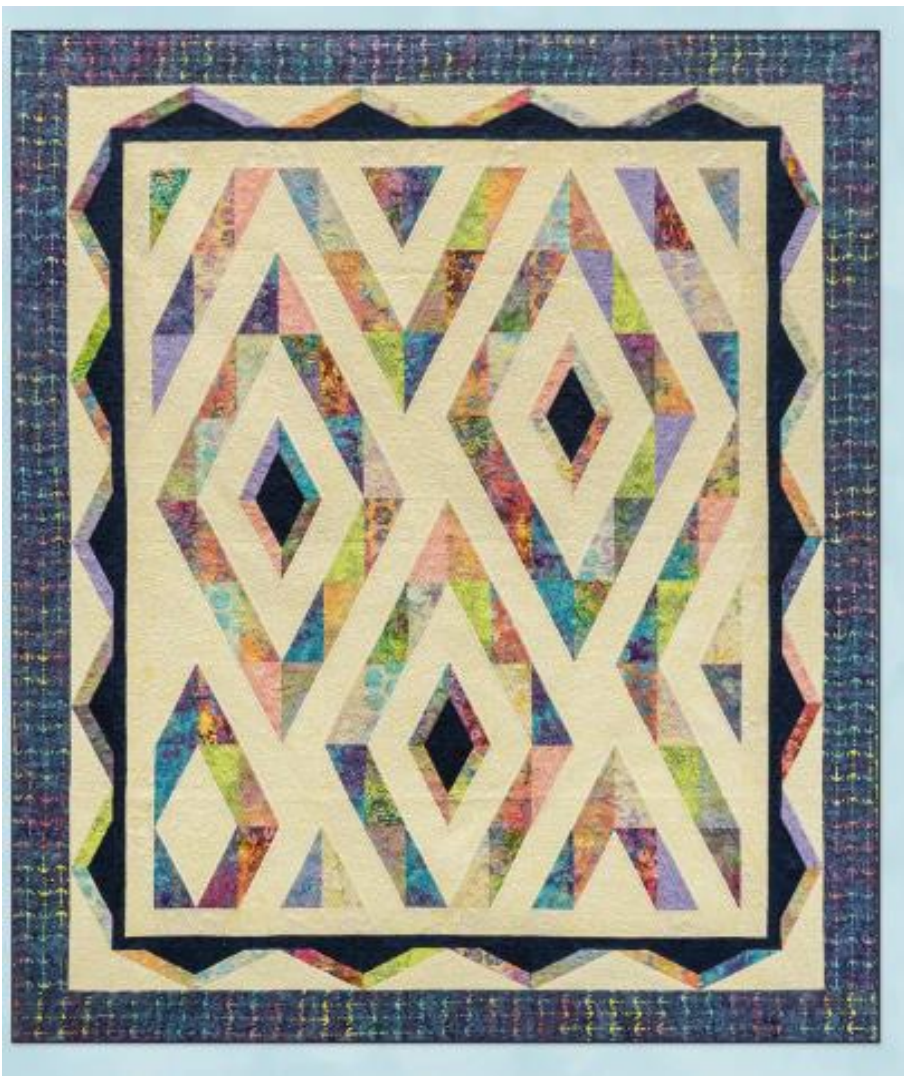
716 307 9183

Wednesday 4/24/2024

Thursday 5/23/2024

PRISM

This incredibly snazzy quilt is constructed using only [Split Rectangle](#) units! The pattern emerges with the combination of scrappy left and right slanting units strategically placed to create the large diamonds. And for a little extra bit of extra pizzazz some of the Split Rectangles units have double diagonal seams to add a dark pop of color to the diamond centers. Using the [Split Rects](#) you will have great success with the fun and interesting design. Finished project size 62" x 72".



Pre-Class Cutting instructions:

Colors	CUT 10-- 7" strips X wof assorted colors. Keep strips folded as it comes off the bolt, wrong sides together. Fat quarters can be used. Cut 2--7" strips from each fat quarter.
Background	Keep all strips folded as it comes off the bolt. Cut 10 -- 7" strips x wof Cut 1 -- 3 1/2" strip x wof. Sub-cut 4-- 3 1/2x6 1/2 rectangles and 4--3 1/2" squares
Accent Fabric (DARK)	Cut 2-- 4 1/2" strips x wof

Supply List

Prism pattern DTSP05 by Sager Creek Quilts

Split Rects Tool and instructions

Rotary cutter and acrylic ruler

Fabric marking pencil

Fabric Scissors

Straight Pins

Neutral piecing thread

1/4" foot for your machine

Bring your sewing machine with power cord and accessories.