

Discount Sewing Center & Jackie Lynn's Fabrics

475 E. Ridge Road, Rochester, NY 14621 (585) 544-4110
www.discountsewingcenter.com

Project: Boot Camp 2

Supply List:

Finished Size - 63" x 72"

For Top of Baskets:

Layout Option A

20 each Fat Quarters: coordinating or themed based (we used fruits, vegetables & candy) *or* ½ yard each of 3 different fabrics

Layout Option B

1 ½ yard Main cotton print

For Baskets & Borders:

Layout Option A

½ yard each of 3 different light fabrics (left side of baskets)

½ yard each of 3 different coordinating dark fabrics (right side of baskets)

Layout Option B

1 ½ yard for left side of basket

1 ½ yard for right side of basket

1 1/2 yards black (or yellow) fabric (background & inner border)

2 1/8 yards border & binding fabric

4 yards 44" wide fabric *or* 2 yards 108" wide fabric for backing

2 yards batting (96" wide) cotton/poly blend

"Triangle Squared" Ruler by Creative Grids

"Perfect Rectangle" Ruler by Creative Grids

Rotary cutter and cutting mat

Acrylic ruler 6"x 24" minimum (6 ½" x 24" preferred)

¼" foot and Walking foot for your machine

Neutral color all-purpose thread for piecing

Pins, Scissors

Finger Press – wooden

Optional:

Felt Board

EZ Angle Ruler

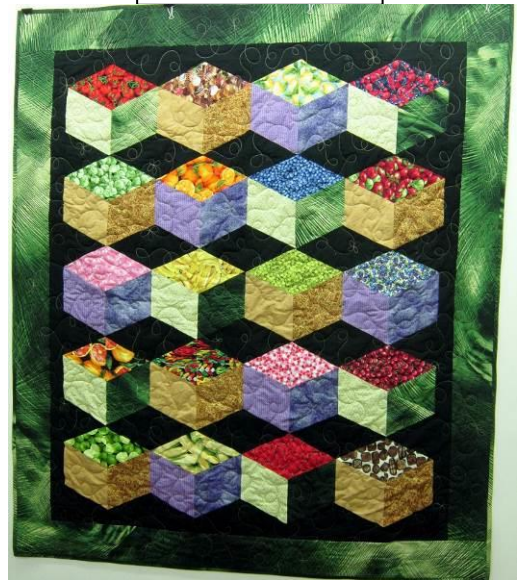
Seam Roll

Glow Line tape

DO NOT PREWASH FABRIC

Bring your sewing machine with foot control, accessories and power cord.

Layout Option A



Layout Option B

